



**Vintage Worx**  
*Community Development Trust*

# Rochdale Heritage Trail in Falinge Park



**Recommended starting point: Main entrance Sheriff St.**

This is an accessible route to uncover some of Rochdale's past and find out more about the history of this area within Falinge Park grounds. The stone pieces are all around the adventure playground, coloured in pink blocks on the map.



From the main entrance take the path to the left, past the children's playground and follow it up to the top. Take a left at the forked area into the adventure playground. Play on the musical notes, climb the rope bridges, and when you're done, walk to the end of this area on the path behind the digger and carefully cross the service path to find the first piece of history.....

## Commemorative Plaque Milton Street

This plaque was on the end of a row of terraced houses in Milton Street, thanking Henry Radcliffe and Abraham Taylor who, whilst working at Duncan St. Mill, saved the lives of 21 people. Children gathered on the roof and were unable to escape. Henry fixed a rope to slide down to safety and Abraham did the same using cloth. The children worked from being 9 years old and could work up to 48 hours a week. That could be like going to school 6 days a week!



Carry on the path with the adventure playground on your right and follow it round the corner...



# Date Stones



These two date stones were from a house built in 1625 near Cronkeyshaw Common called Foxholes. They were put above a cellar door when the property was rebuilt around 1793. The letters on the top date stone from 1625 stand for Richard Entwisle and his wife Grace Entwisle, we don't know who the

last letters belonged to.

The 1653 stone letters are John Entwisle, his wife Dorothy, and their son Richard. We do not know who the last two letters belonged to.

If you had a date stone on your house of all your family letters, what would it look like?



## Amen Corner, Newgate

What face do you see? Water would come out of it its mouth....is it a lion, a person?

The stone carved gargoyles is on its end in the park, but can be seen in the roof in the picture of the house, and was used to carry rainwater away from the roof and walls of the building to protect it from damage.

When it was knocked down in 1910, it was probably the oldest house in Rochdale, at over 400 years old.



Walk a little further along this path as it curves to find the next one.....

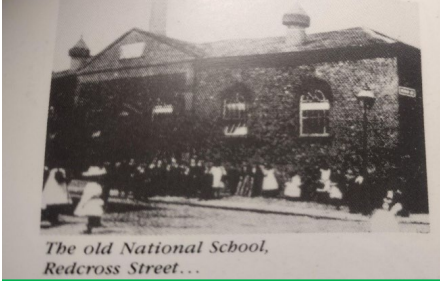


# St Mary's National School 1814 - 1896

## Redcross St

This was the first free school in Rochdale, In the first year it opened there were 219 boys attending and 87 girls.

The school had two classrooms; one for boys and one for the girls, with a large yard attached to each. How many children are in your year at school?



Walk a little further down the path to find the last one...



## The Red Lion, Lord St

The old doorway and date stone 1708 built by three brothers.

The Inn was pulled down to make way for Newgate.

Can you read any of the letters on the arch?

They are the three brothers; Gabriel, Josiah and Samuel Gartside



Continue on the path and follow it as it goes left. You are now at the viewing point...

The building above you is all that remains of Mount Falinge, a large and expensive house that was built by the Royds family over 200 years ago.



Follow the path down the hill and you are back to the start!

### Acknowledgements

Rochdale Local Studies Centre, (formerly) Sparth Community Centre for their help in locating material and historical photographs. H. Ward photographs and author E. Taylor re photograph of the commemorative plaque on Milton Street

July 2025